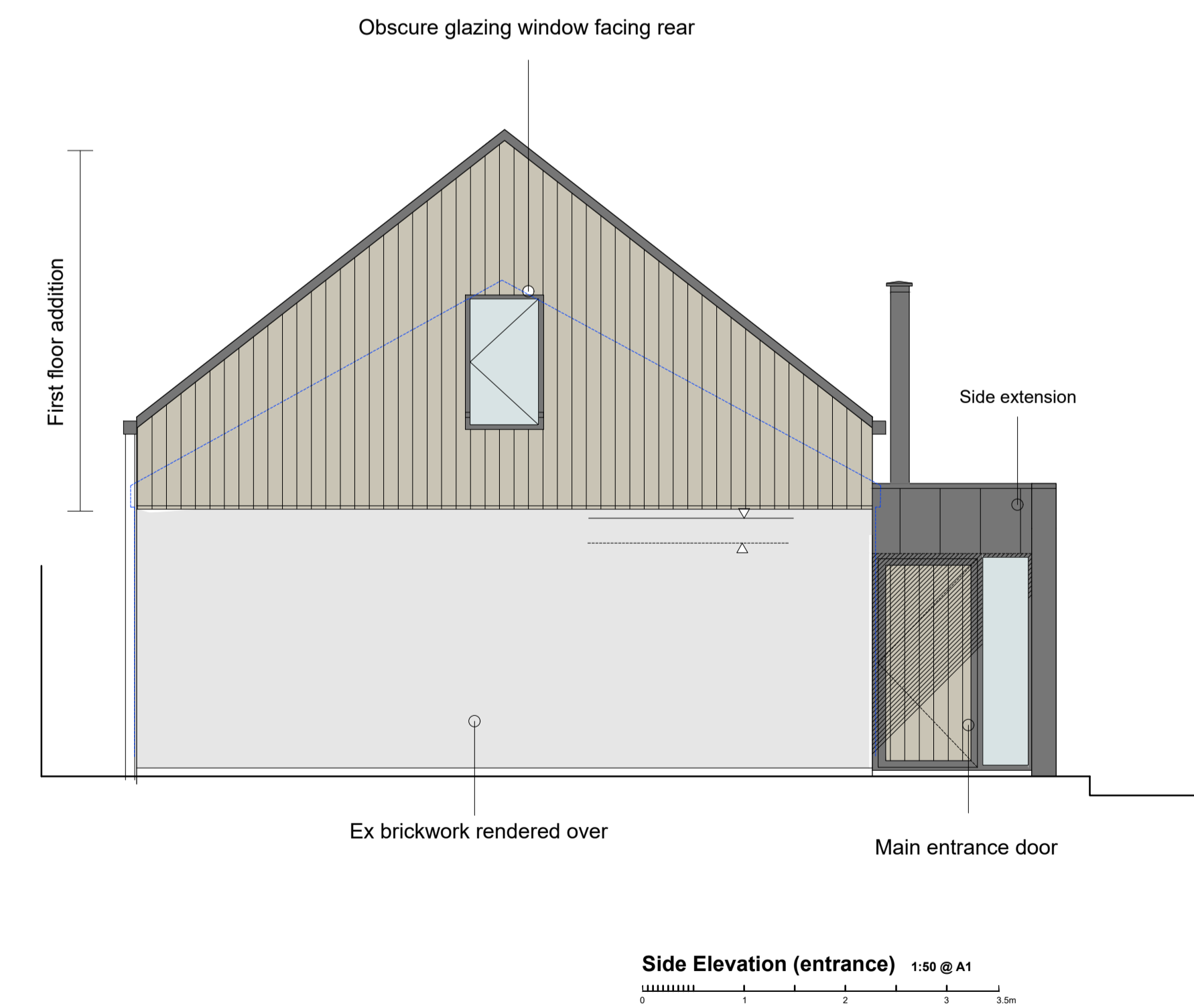
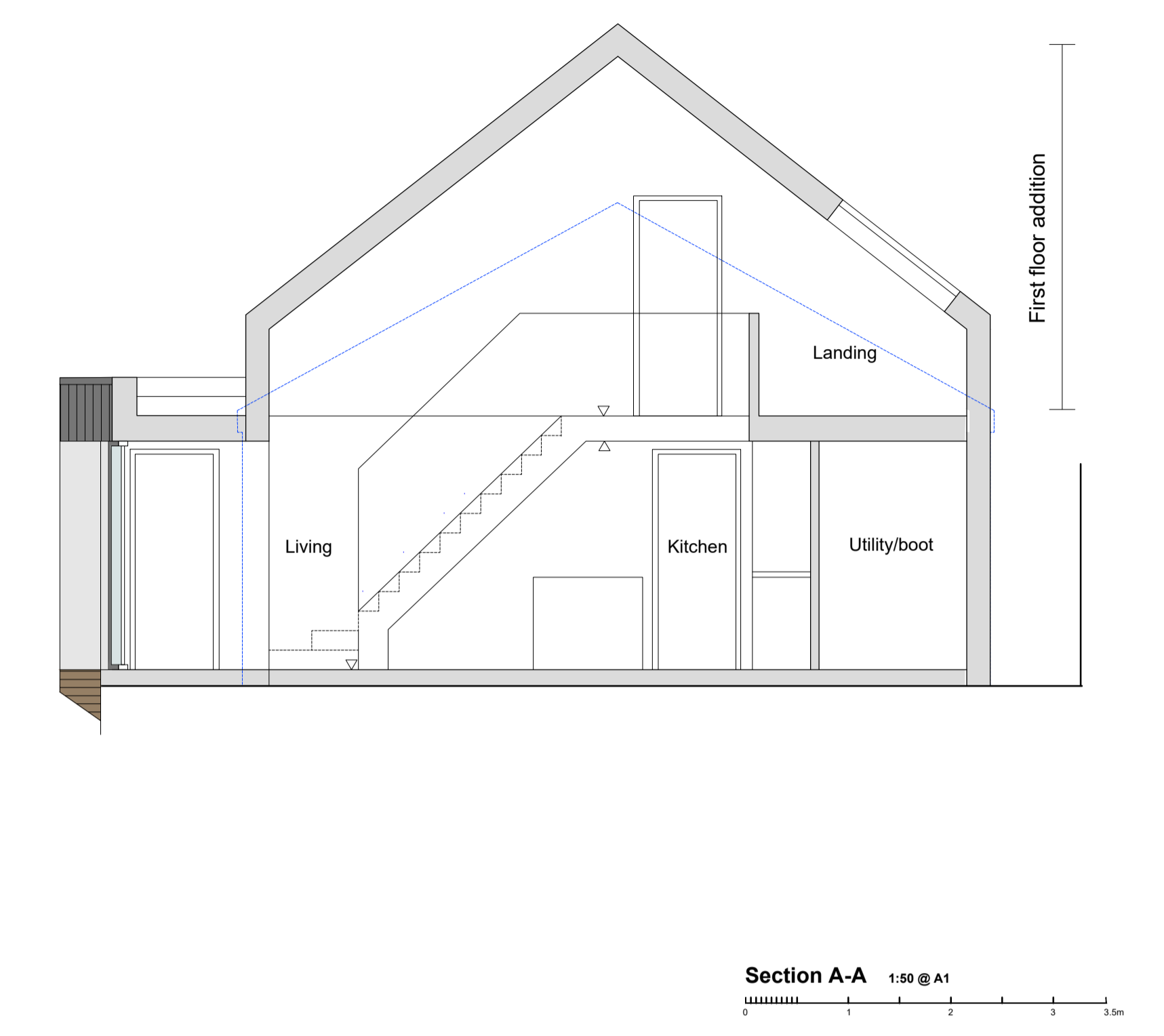
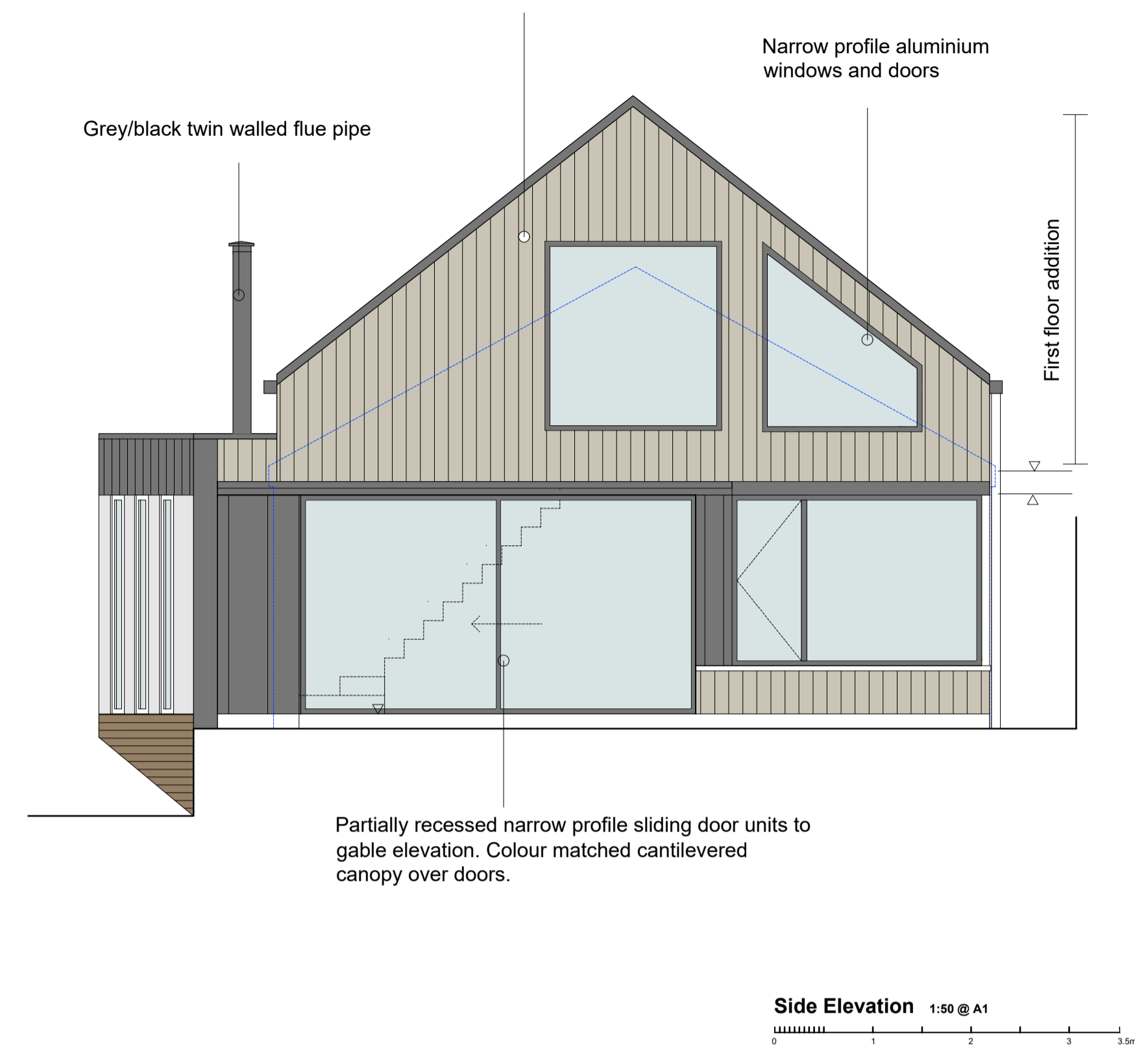




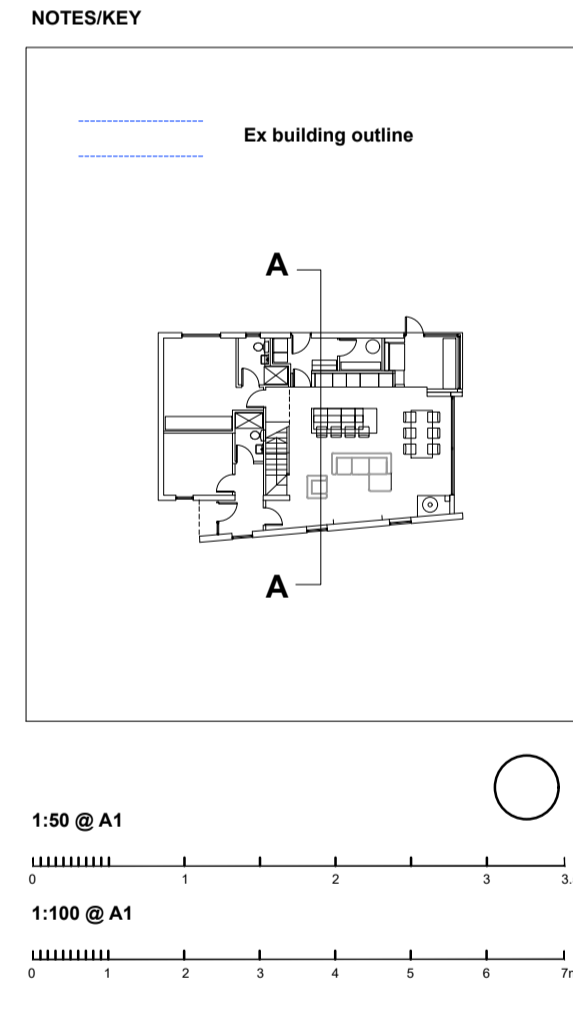


REV	DATE	DESCRIPTION
A	FEB-24	UPDATES TO MATERIALS AND ROOFLIGHTS



- Primary Materials**
-  Cladding. Composite cladding boards, vertically orientated, timber finish
 -  Cladding. Standing seam interlocking metal. To be utilised sections of walls, trims etc to match
 -  Off white render to some elements as shown
 -  Narrow profile dark grey/black aluminium windows and doors



Status **PLANNING**

Black Box Architects Ltd
 1 Devonshire Chambers
 8 Devonshire Street
 Carlisle Cumbria
 CA3 8AD
 Tel: 01228 402 200
 office@blackboxarchitects.com www.blackboxarchitects.com

Project **Sunset View**
 Bowness on Solway

Drawing **Proposed extensions and alterations**

Detail **Proposed Elevations**

Scale 1:50 A1

Date Oct-25

Job no. 2025-136-101A Rev A