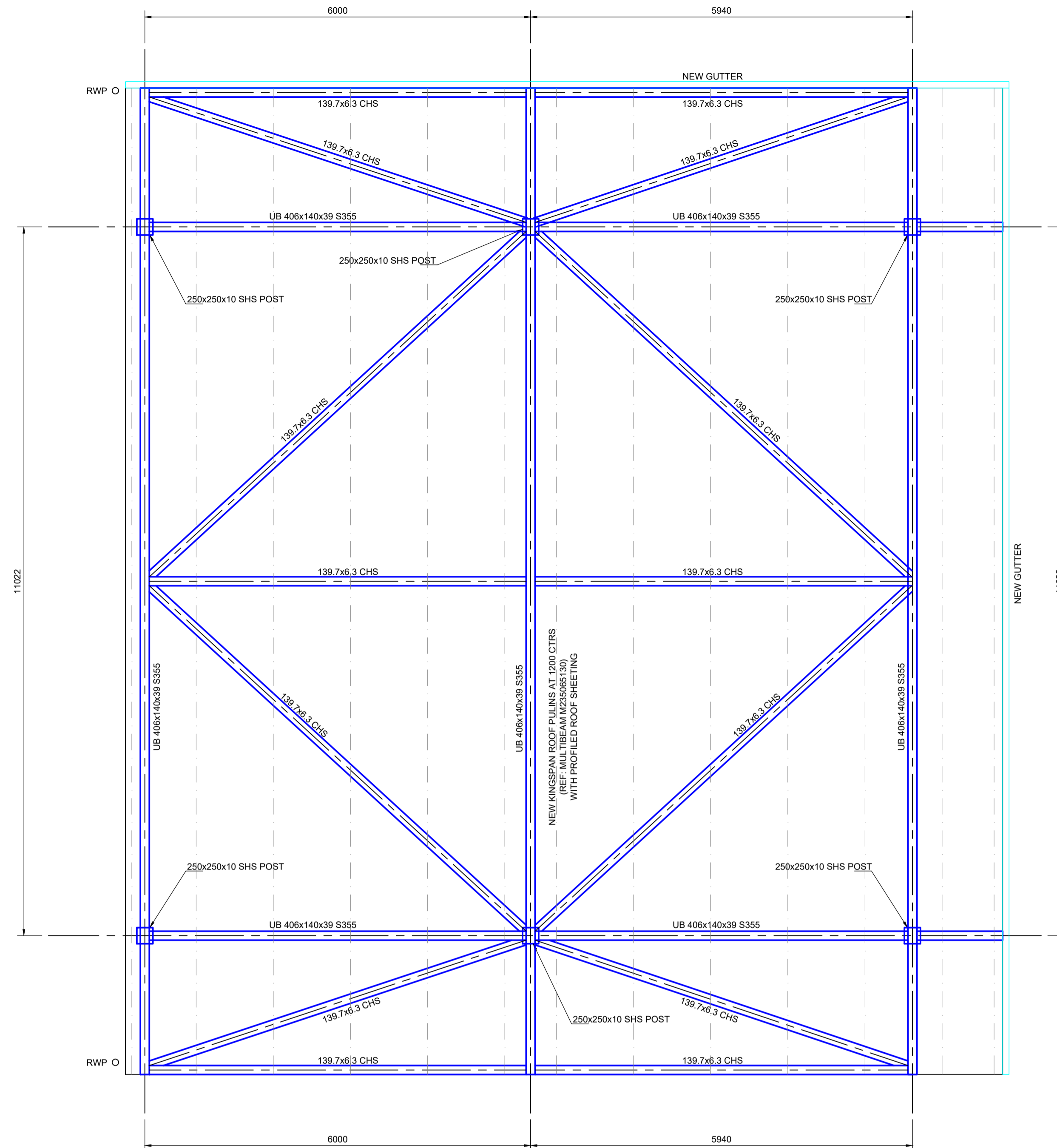
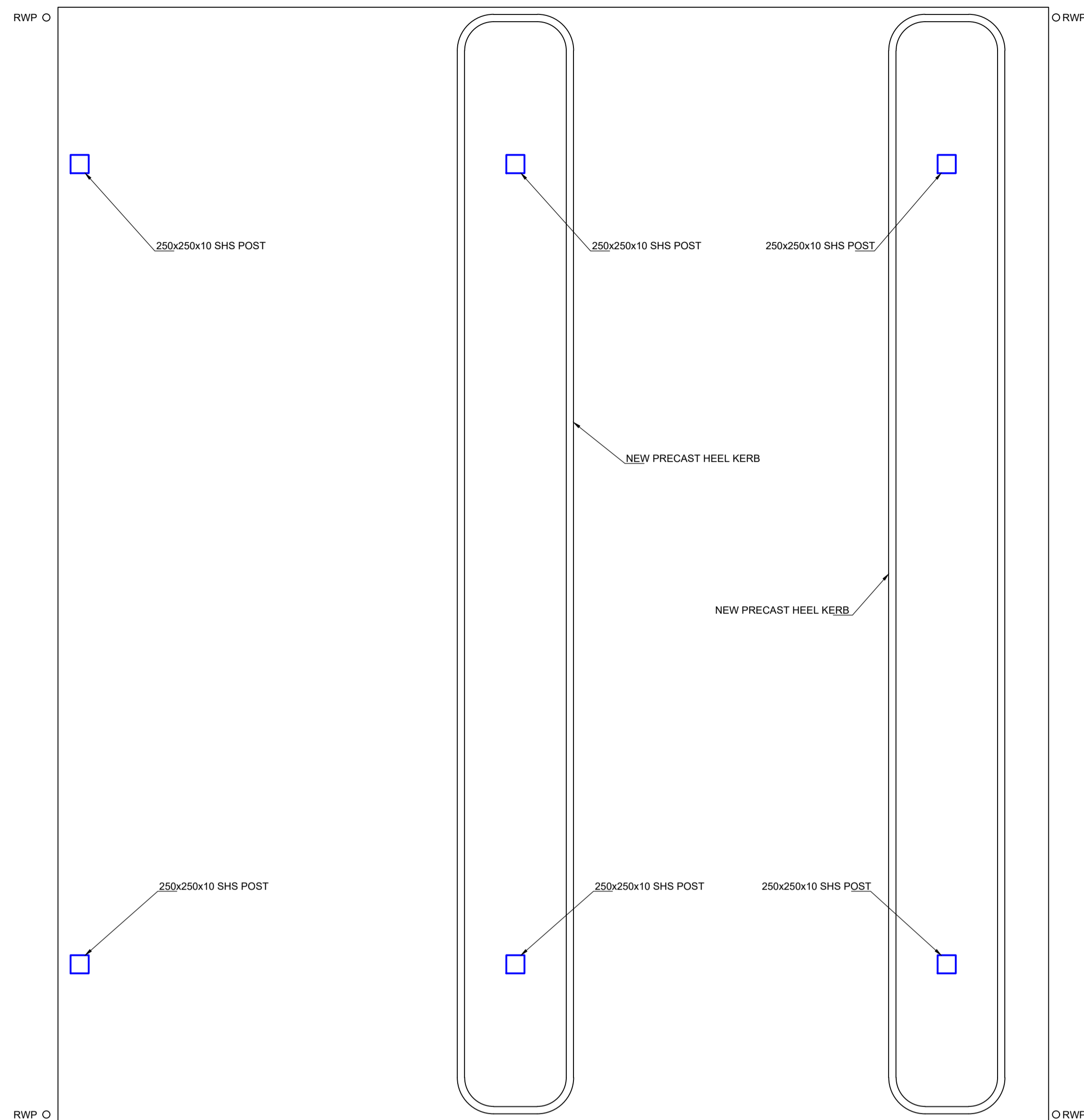


NEW POSTS TO BE PAINTED WITH WARNING CHEVRONS TO MATCH EXISTING STEELWORK



- NOTES:
- DO NOT SCALE FROM THIS DRAWING
 - THE CONTRACTOR SHALL BE RESPONSIBLE FOR CHECKING AND VERIFICATION OF ALL DIMENSIONS ON SITE PRIOR TO COMMENCEMENT
 - THE CONTRACTOR SHALL CONFIRM AND BRING TO THE ATTENTION OF THE ENGINEER ANY DISCREPANCIES CONTAINED IN THIS DRAWING PRIOR TO COMMENCEMENT.

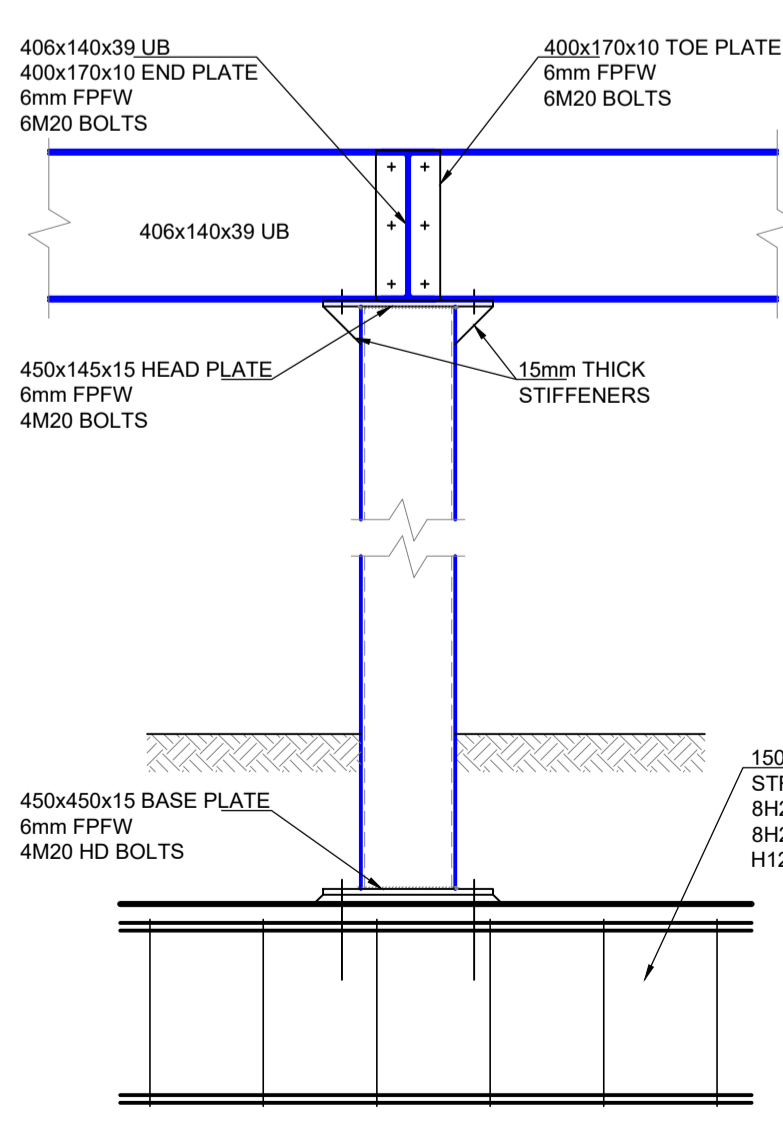
REFER TO DRAWING 24-057-301 FOR FOUNDATION DETAILS

TRUCK BAY LAYOUT

SCALE 1:50

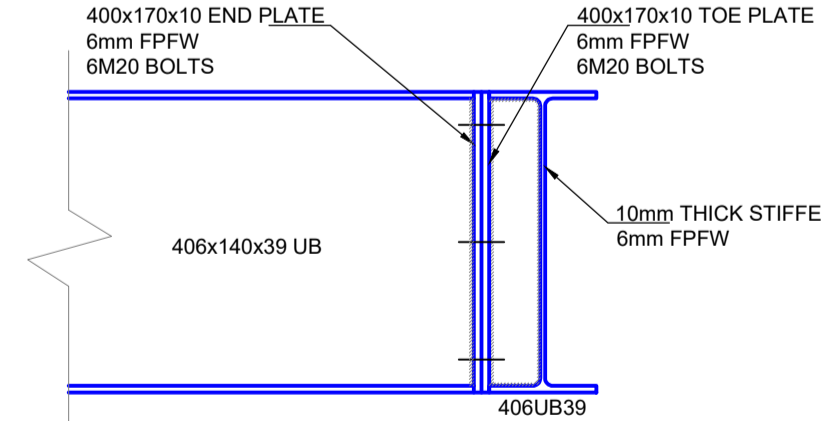
TRUCK BAY STEELWORK LAYOUT

SCALE 1:50



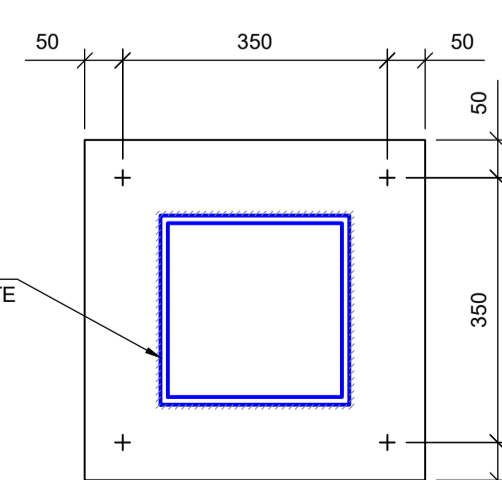
STEEL POST BASE DETAIL

SCALE 1:20



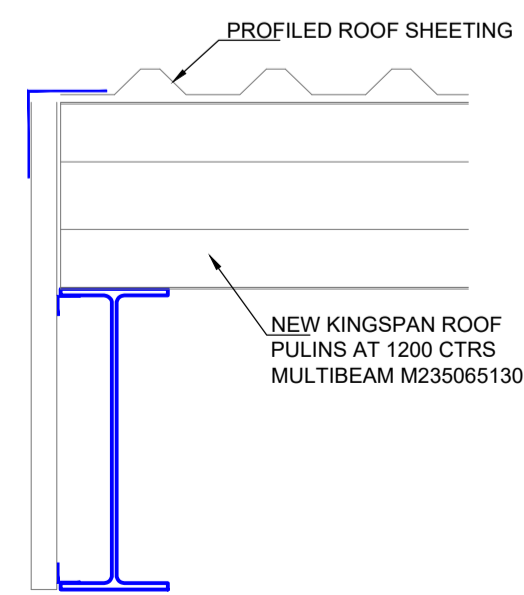
BEAM CONNECTION DETAIL

SCALE 1:10



BASE PLATE DETAIL

SCALE 1:10



ROOF EDGE DETAIL

SCALE 1:10

7.0 STEELWORK

- 7.1 ALL STEELWORK HAS BEEN DESIGNED IN ACCORDANCE WITH BS 5950.
- 7.2 ALL STRUCTURAL STEELWORK SHALL BE SUPPLIED AND FABRICATED BY A REGISTERED FABRICATOR IN ACCORDANCE WITH THE NATIONAL STRUCTURAL STEELWORK SPECIFICATION FOR EXECUTION CLASS EC2. THE MAIN CONTRACTOR SHALL OBTAIN AND VALIDATE THE REGISTRATION CERTIFICATION PRIOR TO SUBMISSION OF SAME TO THE CONTRACT ADMINISTRATOR.
- 7.3 UNLESS NOTED OTHERWISE, ALL HOT ROLLED STEELWORK SHALL COMPLY WITH BS EN 10025 GRADE S355JR EXCEPT WHERE ANY THICKNESS EXCEEDS 30mm IN WHICH CASE IT SHALL COMPLY WITH BS EN 10025 GRADE S355J0. ALL HOT FINISHED TUBULAR STEELWORK SHALL COMPLY WITH BS EN 10210 GRADE S355J0H OR S355J2H. COLD FORMED SECTIONS SHALL NOT BE USED. ALL STEELWORK SHALL BE SUPPLIED WITH AN INSPECTION CERTIFICATE TO EN 10204 TYPE 3.1.B WHICH SHALL BE SUBMITTED TO THE CONTRACT ADMINISTRATOR.
- 7.4 ALL WELDS SHALL BE CLASS 42 AND ALL WELDING CONSUMABLES SHALL CONFORM TO BS5950-2. ALL WELDING SHALL BE IN ACCORDANCE WITH BS EN ISO 15607:2003 BY OPERATIVES SUITABLY QUALIFIED AND EXPERIENCED IN CURRENT WELDING GOOD PRACTICE.
- 7.5 UNLESS NOTED OTHERWISE ALL STEELWORK SHALL BE SUPPLIED TO SITE BLAST CLEANED AND PAINTED WITH 2 COATS GREY ZINC PHOSPHATE PRIMER. EACH COAT SHALL BE 75 MICRONS THICK. ALL STEELWORK BELOW GROUND LEVEL (AND 200mm ABOVE IT) SHALL IN ADDITION RECEIVE ONE COAT OF RUBBERISED PAINT.
- 7.6 ALL GALVANISING SHALL BE IN ACCORDANCE WITH BS EN ISO 1461. WHERE GALVANISED SECTIONS ARE SPECIFIED, STEELWORK SHALL BE SUPPLIED TO SITE WITH A HOT DIPPED GALVANISED COAT NOT LESS THAN 140 MICRONS THICK. ALL SUCH STEELWORK BELOW GROUND LEVEL (AND 200mm ABOVE IT) SHALL IN ADDITION RECEIVE ONE COAT OF RUBBERISED PAINT.
- 7.7 ALL NEW STEELWORK SHALL BE FIRE PROTECTED IN ACCORDANCE WITH THE ARCHITECT'S SPECIFICATION BUT NOT LESS THAN 1 HOUR PROTECTION SHALL BE PROVIDED. ALL EXISTING STEELWORK WHICH SUPPORTS PROTECTED ZONES OR ELEMENTS FORMING PARTS OF PROTECTED ZONES, SHALL BE PROVIDED WITH NOT LESS THAN 1 HOUR FIRE PROTECTION, IN ACCORDANCE WITH THE ARCHITECT'S SPECIFICATION.

- 7.8 THE CONTRACTOR SHALL DESIGN AND DETAIL ALL STEELWORK CONNECTIONS NOT ALREADY SHOWN OR DESCRIBED AS TYPICAL ON THE ENGINEER'S DRAWINGS IN ACCORDANCE WITH BS5950. THE DESIGN LOADINGS SHALL BE OBTAINED FROM THE ENGINEER'S GENERAL ARRANGEMENT DRAWINGS
- 7.9 THE CONTRACTOR SHALL PREPARE AND SUBMIT FABRICATION DRAWINGS, CALCULATIONS AND DETAILS OF THE PROPOSED CONNECTIONS. THESE, TOGETHER WITH A DESIGN CERTIFICATE AND CVS, INDICATING THE QUALIFICATIONS AND RELEVANT EXPERIENCE FOR THE DESIGNERS AND CHECKERS, SHALL BE SUBMITTED FOR REVIEW BY THE ENGINEER PRIOR TO COMMENCEMENT OF ANY FABRICATION. FABRICATION MAY NOT COMMENCE UNTIL THE REVIEW IS CONCLUDED

- 7.10 FABRICATION DRAWINGS SHALL CLEARLY SHOW THE WEIGHT AND CENTRE OF GRAVITY OF EACH MEMBER, AS FABRICATED. TWO SETS OF THE FABRICATION DRAWINGS WILL BE SUPPLIED TO SITE FOR USE BY CRANE OPERATORS AND OTHERS.

- 7.11 ALL STEEL MEMBERS SHALL BE FITTED WITH LIFTING LUGS TO ALLOW SAFE LIFTING AND PLACEMENT OPERATIONS. 2NO LUGS SHALL BE FITTED TO HORIZONTAL AND SLOPING MEMBERS SUCH THAT THE LUGS ARE EQUIDISTANT FROM THE MEMBER CENTROID. TWO LUG SHALL BE PLACED AT THE TOP OF EACH COLUMNS (OR PART THEREOF) TO ALLOW TRULY VERTICAL PLACEMENT OF SAME. LUGS MAY BE WELDED OR BOLTED AND ARE TO BE PLACED TO AVOID CONFLICT WITH OTHER COMPONENT PARTS OF THE FINISHED STRUCTURE.

- 7.12 PRIOR TO FABRICATION, THE STEELWORK SUBCONTRACTOR SHALL LIAISE WITH THE MAIN CONTRACTOR TO ESTABLISH THE PROPOSED METHOD OF EDGE PROTECTION TO THE SIDES OF THE STRUCTURE AND ANY OPENINGS IN FLOORS AND ROOFS. WHERE REQUIRED BY THE MAIN CONTRACTOR, LUGS OR OTHER FITTINGS SHALL BE DETAILED IN THE FABRICATION DRAWINGS FOR THIS PURPOSE. THESE LUGS OR FITTINGS MAY BE WELDED OR BOLTED AND ARE TO BE PLACED TO AVOID CONFLICT WITH OTHER COMPONENT PARTS OF THE FINISHED STRUCTURE.

- 7.13 THE CONTRACTOR SHALL DESIGN, DETAIL, SUPPLY AND ERECT THE STEEL STAIRS AND ASSOCIATED COMPONENTS, INCLUDING STRINGERS TREADS LANDINGS AND HANDRAILS, COMPLETE WITH ALL FIXINGS AND FITTINGS.

- 7.14 ALL STEEL STAIRS SHALL BE DESIGNED AND FABRICATED BY A SPECIALIST STAIR MANUFACTURER IN ACCORDANCE WITH BS5950. THE LOADINGS, IN ADDITION TO SELF WEIGHT SHALL BE DERIVED IN ACCORDANCE WITH BS6399 AND THESE NOTES.

- 7.15 THE STEEL STAIR MANUFACTURER SHALL PRODUCE LAYOUT DRAWINGS, DETAILS AND CALCULATIONS FOR THE STAIRS AND ASSOCIATED COMPONENTS. THESE, TOGETHER WITH A DESIGN CERTIFICATE AND CVS, INDICATING THE QUALIFICATIONS AND RELEVANT EXPERIENCE FOR THE DESIGNERS AND CHECKERS, SHALL BE SUBMITTED FOR REVIEW BY THE ENGINEER, PRIOR TO COMMENCEMENT OF ANY FABRICATION. FABRICATION MAY NOT COMMENCE UNTIL THE REVIEW IS CONCLUDED.

- 7.16 CONNECTIONS:
- STEEL CONNECTION DESIGNS TO BE UNDERTAKEN BY THE STEEL FABRICATOR IN ACCORDANCE WITH BS 5950. NO FIN PLATE CONNECTIONS FOR BEAM ENDS WILL BE PERMITTED.
- CONNECTION LOADS:
- 610 UB - 250kN SHEAR (+/- 150kN AXIAL)
 - 533 UB - 250kN SHEAR (+/- 150kN AXIAL)
 - 254 UB - 150kN SHEAR (+/- 150kN AXIAL)
 - 139 CHS - +/- 300kN AXIAL
 - 168 CHS - +/- 300kN AXIAL
 - 193 CHS - +/- 500kN AXIAL
- ALL OTHER CONNECTIONS 75kN SHEAR & +/-75kN AXIAL UNO.

Rev	Description	Drwn	Chkd	Date



Phone: 01698 744 610
Email: info@indevconsult.com
Website: www.indevconsult.com
Address: Quatt House, 3 Finch Way, Strathclyde Business Park, Bathhill, ML4 3PT



Project Title: NEW VAT ROOM
FIRST MILK
ASPATRIA

Drawing Title: TRUCK BAY
LAYOUT

Drawn By: DQ Checked By: SF Issue Status:

Date Drawn: 05/09/2024 Scales: 1:50

Drawing Number: 24-057-403 Revision: -