

HILL CLOSE

Fairview

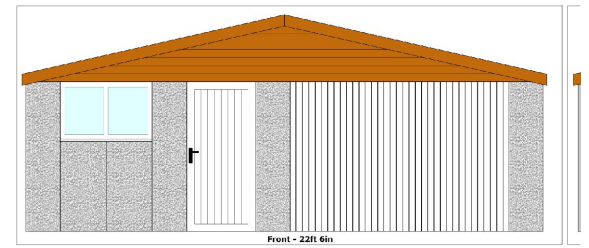
B

Brook Rigg

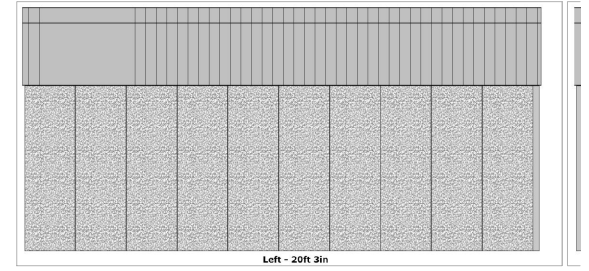
Stockshill

Turning space

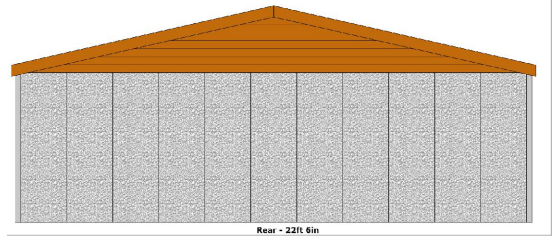
New concrete section double garage



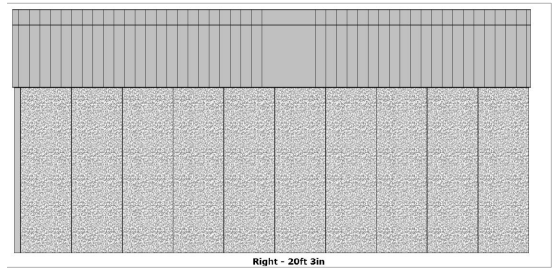
PROPOSED FRONT ELEVATION



PROPOSED SIDE ELEVATION



PROPOSED REAR ELEVATION



PROPOSED SIDE ELEVATION

Garage specification:
Roof :
 15° pitch roof with Bold Roll fibre cement roof sheets in terracotta.
Walls:
 Concrete steel reinforced panels with Spar finish.
Doors:
 Pre-framed, fully retractable, white powder coated galvanised steel, Horizontal ribbed up and over door.

Elevations 1/100 scale

PROPOSED BLOCK PLAN

SCALE BAR 1/200 ORIGINAL DRAWING SIZE A3	0.0	2.0	4.0	6.0	8.0	10.0	12.0	14.0	16.0	18.0	20.0 metres	80.0 metres	70.0	60.0	50.0	40.0	30.0	20.0	10.0	0.0	SCALE BAR 1/500
SCALE BAR 1/100	0.0	1.0	2.0	3.0	4.0	5.0	6.0	7.0	8.0	9.0	10.0 metres	400.0 metres	350.0	300.0	250.0	200.0	150.0	100.0	50.0	0.0	SCALE BAR 1/2500
SCALE BAR 1/50	0.0	1.0	2.0	3.0	4.0	5.0	6.0	7.0	8.0	9.0	10.0 metres	400.0 metres	350.0	300.0	250.0	200.0	150.0	100.0	50.0	0.0	SCALE BAR 1/2500

Alteration and extension at Brook Rigg, Stocks Hill Close, High Harrington CA14 5PH for Gordon Douglas Esq.

BLOCK PLAN PROPOSED AND GARAGE ELEVATIONS

Scale: 1/200 @ A3
 Date: OCT 2025
 DWG No. 254/0443/06

Geoffrey Wallace Limited FCSD MCIAT
Architectural Design and Technology
 Mobile 07816046756
 geoffreywallaceltd@gmail.com